

Picture1:

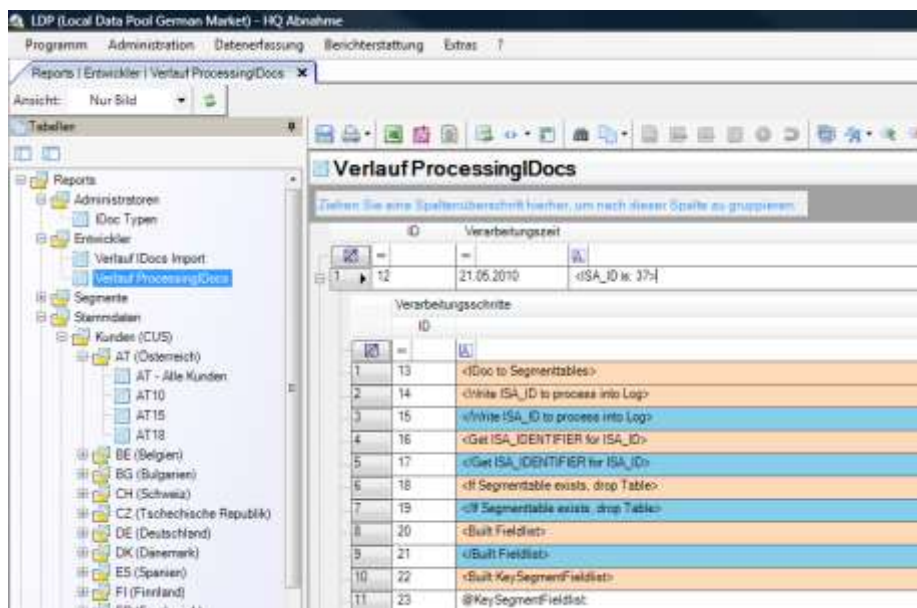
In the UltraGrid's childband („Verarbeitungsschritte“) you can see some strings in the second column. All these strings start with two or more tab characters but they are not displayed.

Picture2:

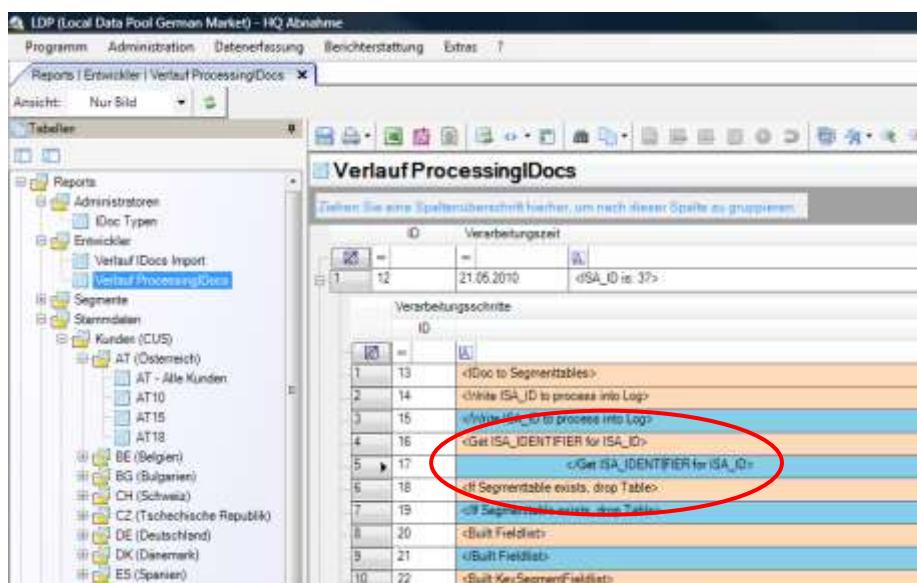
After clicking into a cell these tab characters appear suddenly. I clicked for example into the cell whose row number is 5 (ID=17).

Question:

Is it possible to show the tab characters always and not only by clicking (activating) a cell?



Picture 1



Picture 2